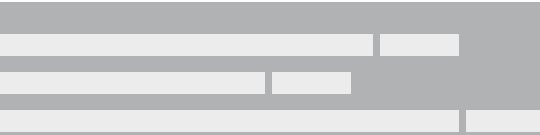
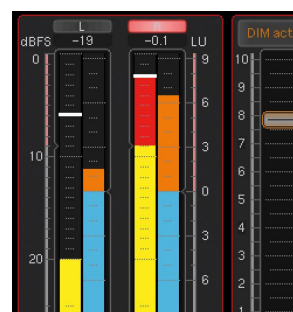
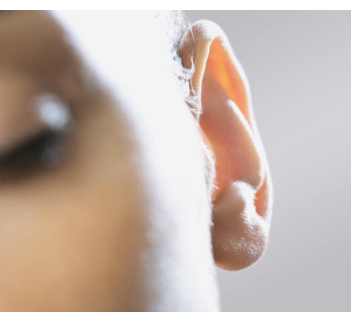


# Loudness Simplified TouchMonitor TM3-3G Smart



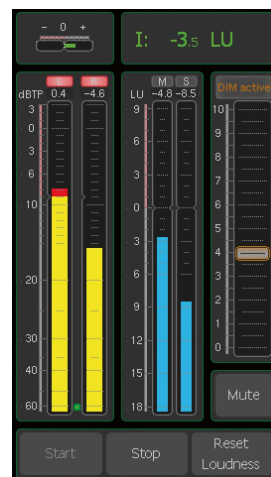
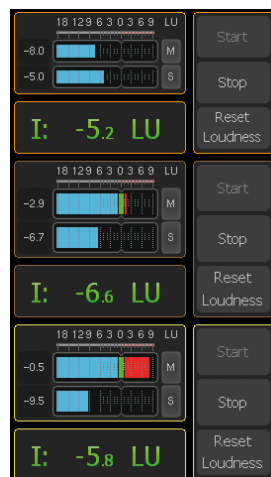
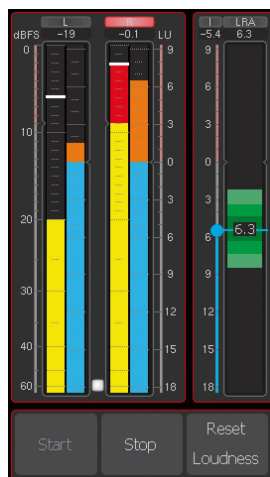
# TouchMonitor TM3-3G Smart



## Loudness Simplified

**Professional Loudness, True Peak and PPM metering for 3G SDI audio with optional 16-channel deembedder outputs and monitor controller.**

The compact TouchMonitor TM3-3G Smart comes with a capacitive 4.3" touch screen for vertical or horizontal use and intuitive preset control. With its integrated 3G-SDI deembedder interface, the TM3-3G Smart displays level and loudness of any eight 3G-SDI audio channels. Independently from this, up to 16 SDI audio signals can be sent to eight AES3 outputs and an analog stereo output.





- 4.3" Touch screen for vertical or horizontal use
- Flexible display layout with scalable instruments
- Separate interface box with audio I/O, USB, GPIO
- 8-channel level & loudness display
- Loudness: EBU R128, ITU-R BS.1770-4/1771-1, ATSC A/85, ARIB, OP-59, AGCOM, CALM, custom
- Monitoring controller with onscreen level fader
- Stereo headphone out
- 16-channel 3G-SDI deembedder with 8 x AES3 out and analog stereo out (RCA) (optional license)
- Moving Coil instruments (optional license) for stereo
- Single channel and summing loudness bargraphs
- Loudness Test Time Control, Loudness Chart option
- Loudness range (LRA) with MagicLRA
- PPM & True Peak, Correlation
- SPL & Dialnorm
- Time Code Reader option
- Numerical display
- Comprehensive set of presets
- Devicer DC1 (Device Configurator software for Windows® & Mac OS X® 10.6. to 10.9.)



The TouchMonitor TM3-3G Smart is a compact and versatile solution for metering, deembedding and monitoring of 3G-SDI audio signals using a 4.3" touch screen for vertical or horizontal use. The TM3-3G Smart's flexible user interface allows for quick and simple preset selection as well as setting the monitoring level (optional license). Presets can be configured in detail using the Devicer DC1 for Mac OS X® or Windows®. The Devicer's GUI lets you select, configure and position the instruments you need in a convenient way. The screen layout can be previewed

any time so that you always see how your preset will look like on the TM3-3G Smart. Besides PPM and True Peak instruments, the TM3-3G Smart features comprehensive loudness measuring features conforming to all relevant international standards (EBU R128, ITU-R BS.1770-4/1771-1, ATSC A/85, ARIB, OP-59, AGCOM, CALM Act). Loudness instruments include single-channel and summing bargraphs, loudness range, loudness chart and numerical displays.

**TM3-3G Smart. Loudness Simplified.**

# Product Overview

## TouchMonitor TM3-3G Smart Table-top Unit (8-Channel)

consisting of a display unit with 4.3" touch screen for vertical and horizontal operation, a remote 3G-SDI interface box (one cable for data and supply, approx. 2 m), and an external power supply

Order no.: **TM3-3GS**

## TouchMonitor TM3-3G Smart Rack-mount Unit (8-Channel)

consisting of a rack-mount display unit with 4.3" touch screen in a mounting frame for horizontal operation, a remote 3G-SDI interface box (one cable for data and supply, approx. 2 m), and an external power supply

Order no.: **TM3-3GS + TM3-2U**

### Display (Display Unit)

Flexible screen layout with scalable instruments	Loudness measurement: EBU R128, ATSC A/85 ITU-R BS.1770-3/1771-1 ARIB, OP-59, AGCOM, CALM, custom	Single channel and summing loudness bargraphs, Loudness Test Time Control	Loudness Range (LRA) with MagicLRA	Numerical loudness Display	SPL measurement	Peak and True Peak measurement	Correlation	Comprehensive set of presets (Personalizing with Devicer DC1*)	Dialnorm measurement	Monitoring Controller
--	---	---	------------------------------------	----------------------------	-----------------	--------------------------------	-------------	--	----------------------	-----------------------

\*) Devicer DC1 is the Device Configurator software for Windows® and Mac OS® for personalizing the units. This software is available for download in the download area of RTW's web site (Support/Manuals & Software).

### Connection (3G-SDI Interface Box)

	3G-SDI In/Through (looped through)	Phones (headphone)	Output (Line out) (analog, unbalanced)	Outputs AES3 (digital, balanced, 110 Ω)	Aux in	USB	GPIO	+24 V DC
Type	3G-SDI: • SD: 525i, 625i • HD: 720p, 1035i, 1080i, 1080p, 1080SF • 3G: 1080p	Stereo out	Stereo Out	8 x Stereo Out	Time Code	Full Speed 2.0	Remote control	Supply voltage
Connector	2 x BNC	3.5 mm headphone jack	2 x RCA	25-pin Sub-D	RCA	Mini-B Data transfer between Devicer DC1 and TM3	RJ-12 (6P6C) External function or preset control	Type Binder 710 locking 4-pin low voltage connector

### Accessories

<b>TM3-MA2U</b> 19"/2U rack carrier/mounting frame to be fitted with up to two units with TM3-2U	<b>1161</b> Extension cable 10 m, enlarges the distance display unit and interface box up to 12 m	<b>1163</b> Snake cable, 2 m, 25-p. Sub-D to 8 XLR-M (for AES3 Out)	<b>1166</b> Mounting plate with 3/8" thread for display unit to be mounted to e.g. goosenecks, mic stands	<b>1178-R</b> Wide voltage power supply (100 - 240 V AC/24 V DC 2.71 A)
--	---	---	---	---

**Dimensions** W x H x D in mm (approx.)

Display Unit 82,5 x 138 x 50

3G-SDI Interface Box 146 x 29 x 85



Windows is either registered trademark or trademark of Microsoft Corporation in the United States and/or other countries. Mac OS is trademark of Apple Inc., registered in the U. S. and other countries.

© 03/2019 | Changes without prior notice! | PITM3GE01

RTW GmbH & Co. KG

Am Wassermann 25 | 50829 Koeln | Germany

Phone: +49 221. 70 913-0 | Fax: +49 221. 70 913-32

Internet: www.rtw.com | E-Mail: rtw@rtw.com

**RTW**  
EYES ON YOUR AUDIO