



MPA1-SOLO-SDI

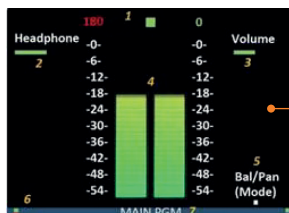
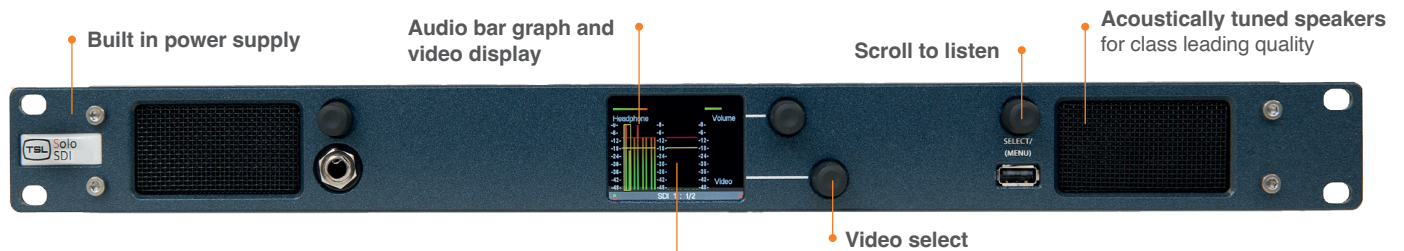
The MPA1 range of audio monitors is trusted by operators and engineers worldwide. The MPA1-SOLO-SDI provides quick and simple audio and video monitoring, featuring intuitive hardware controls, an in-built web page and support for external control systems.

The powerful and intuitive MPA1-SOLO-SDI presents users with instant 'at-a-glance' notification of all 16 SDI embedded audio channels on its front panel display, as well as those derived from its dedicated AES and analogue inputs.

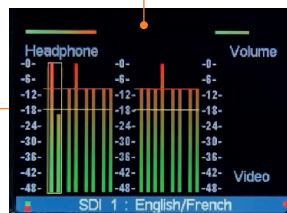
The unique 'scroll to hear' function allows users to scroll through all available audio channels, either individually or as stereo pairs,

whilst the Select feature allows the front panel to display audio level meters, phase metering and video monitoring modes.

As a member of the MPA1 range of audio monitors, the MPA1-SOLO-SDI comes complete with a comprehensive web page and SNMP support, allowing remote configuration and control.



Large audio meters with phase metering



16 audio level meters

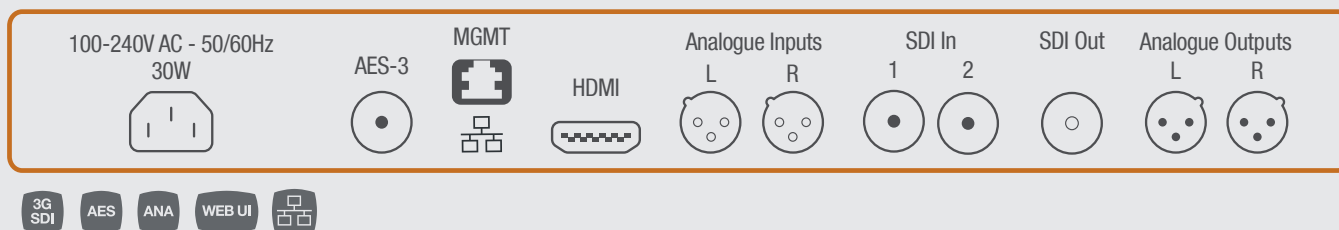


Video monitoring

FEATURES

- ⦿ 2 x auto-sensing, SD/HD/3G-SDI (23.98, 24, 25, 29.97, 30, 50, 59.94, 60Hz) video inputs
- ⦿ De-embedded audio monitoring from video (SD/HD/3G-SDI) with intuitive 'scroll to hear' of all 16 embedded audio channels
- ⦿ Video display of SD/HD/3G-SDI sources
- ⦿ 2 x balanced analogue inputs on XLR connectors
- ⦿ 1 x AES-3id input on BNC
- ⦿ 1 x Ethernet connection for web page and SNMP control
- ⦿ 1 x front panel USB connector for system updates
- ⦿ 2 x line level balanced analogue outputs for connection to external loudspeakers. Line level with selectable mute and -20 dB attenuation
- ⦿ 1 x SDI loop thru (with selectable 'fixed' or 'follow' modes)
- ⦿ 1 x HDMI output

REAR PANEL

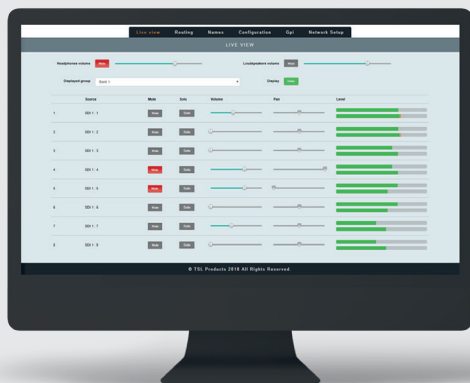


SPECIFICATIONS

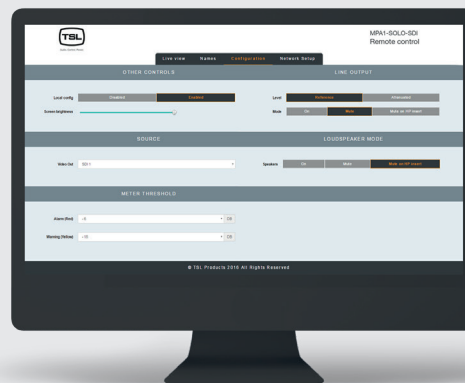
HEIGHT	1RU	UNIT CONTROL	SNMP, Web page
DIMENSIONS	483mm x 45mm x 100mm	SDI INPUTS	3G/HD/SD-SDI (SMPTE 424M, 292M, 259M)
POWER	85-264V ~ 50/60Hz, 0.75A – 0.5A Max 30W	AES-3id	SMPTE 276M
WEIGHT	1.4 kg	ANALOGUE INPUTS	>60k Ohms
DISPLAY	Single 2.4"	ANALOGUE OUTPUTS	Stereo, Balanced Fixed or Variable Level
UPGRADES	VIA USB	SIGNAL TO NOISE RATIO	72dB (+4dBu input level, THD+NA weighted)
AUDIO CHANNELS	16	PEAK ACOUSTIC OUTPUT	90dB @ 1foot

WEB PAGE CONTROL AND MONITORING

LIVE VIEW



CONFIGURATION VIEW



ORDERING INFORMATION

Ordering Code

MPA1-SOLO-SDI

Description

Simple 1RU SDI audio monitor. Front panel display with 16 level meters, source names, audio phase and video confidence display. 2 x 3G/HD/SD SDI input, 1x AES-3id input and 2x balanced analogue inputs. 1x balanced stereo output, HDMI output + 1 front panel headphone output. Internal loudspeakers, internal PSU, web interface and SNMP control.